



**REGIONAL SPECIALISED METEOROLOGICAL CENTRE-TROPICAL CYCLONES, NEW DELHI
SPECIAL TROPICAL WEATHER OUTLOOK**

DEMS-RSMC SPECIAL TROPICAL CYCLONES NEW DELHI DATED 14.08.2022

SPECIAL TROPICAL WEATHER OUTLOOK FOR NORTH INDIAN OCEAN (THE BAY OF BENGAL AND ARABIAN SEA) VALID FOR NEXT 120 HOURS ISSUED AT 0900 UTC OF 14.08.2022 BASED ON 0600 UTC OF 14.08.2022.

DEPRESSION CROSSED WEST BENGAL & ADJOINING NORTH ODISHA COASTS CLOSE TO DIGHA

THE DEPRESSION OVER NORTHWEST BAY OF BENGAL AND ADJOINING COASTAL AREAS OF WEST BENGAL & NORTH ODISHA MOVED WEST-NORTHWESTWARDS WITH A SPEED OF 10 KMPH DURING LAST 3 HOURS, CROSSED WEST BENGAL & ODISHA COASTS CLOSE TO DIGHA BETWEEN 0500 & 0600 UTC AND LAY CENTERED AT 0600 UTC OF TODAY, THE 14TH AUGUST OVER COASTAL WEST BENGAL & ADJOINING NORTH ODISHA NEAR LATITUDE 21.9°N AND LONGITUDE 87.5°E ABOUT 20 KM WEST OF DIGHA (42901) AND 70 KM EAST-NORTHEAST OF BALASORE (42895).

IT IS VERY LIKELY TO CONTINUE TO MOVE WEST-NORTHWESTWARDS AND MAINTAIN THE INTENSITY OF DEPRESSION DURING NEXT 24 HOURS.

AS PER INSTAD 3D IMAGERY AT 0600 UTC, INTENSITY OF THE SYSTEM IS CHARACTERISED AS C.I.1.5. BROKEN LOW AND MEDIUM CLOUDS WITH EMBEDDED INTENSE TO VERY INTENSE CONVECTION LAY OVER NORTH BAY OF BENGAL, EAST ODISHA, SOUTH GANGETIC WEST BENGAL AND SOUTHWEST ODISHA. MINIMUM CLOUD TOP TEMPERATURE IS MINUS 850C.

ESTIMATED MAXIMUM SUSTAINED WIND SPEED IS 25 KNOTS GUSTING TO 35 KNOTS. ESTIMATED CENTRAL PRESSURE IS 994 HPA. SEA CONDITION IS LIKELY TO BE ROUGH TO VERY ROUGH OVER NORTH BAY OF BENGAL AND ALONG & OFF BANGLADESH, WEST BENGAL, ODISHA AND ADJOINING NORTH ANDHRA PRADESH COASTS TILL 0000 UTC OF 15TH AUGUST .

REMARKS:

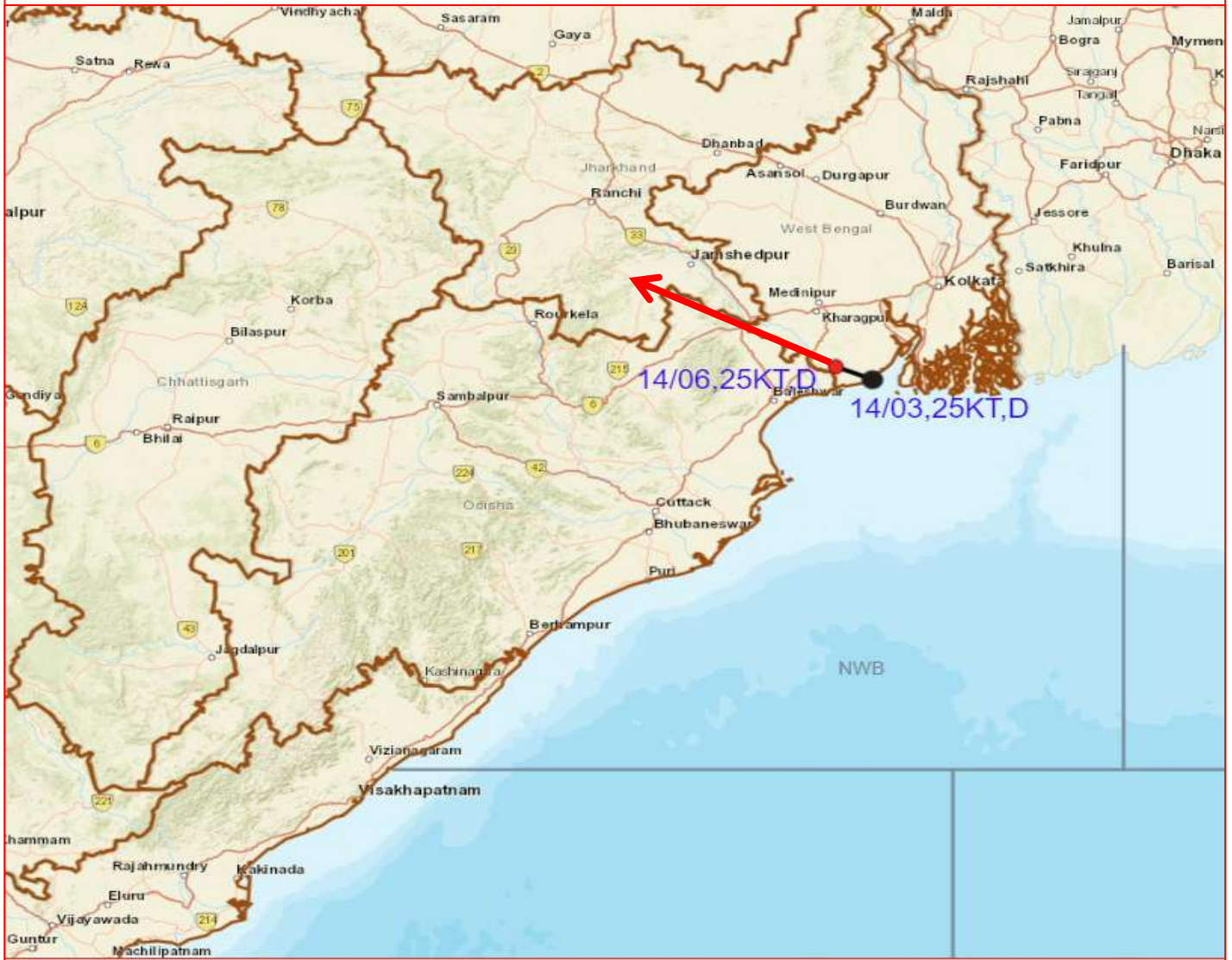
LOW LEVEL VORTICITY HAS INCREASED AND IS AROUND $150 \times 10^{-6} \text{ S}^{-1}$ OVER NORTHWEST BOB OFF WEST BENGAL COAST AND IS EXTENDING UPTO 200 HPA LEVELS. LOW LEVEL CONVERGENCE IS SAME AND IS AROUND $30 \times 10^{-5} \text{ S}^{-1}$ OVER NORTH ODISHA TO THE SOUTHWEST OF SYSTEM CENTRE. POSITIVE UPPER LEVEL DIVERGENCE IS AROUND $20 \times 10^{-5} \text{ S}^{-1}$ OVER SYSTEM CENTRE AND ALONG FORECAST TRACK. WIND SHEAR IS LOW (05-10 KNOTS) OVER SYSTEM AREA AND ALONG THE FORECAST TRACK. UNDER THESE FAVOURABLE MONSOON CONDITIONS, THE SYSTEM IS LIKELY TO MAINTAIN IT'S INTENSITY DURING NEXT 24 HOURS.

MOST OF THE NWP MODELS ARE UNANIMOUSLY INDICATING WEST-NORTHWESTWARDS MOVEMENT OF THE SYSTEM AND MODELS ARE ALSO INDICATING THE SYSTEM TO MAINTAIN IT'S INTENSITY DURING NEXT 24 HOURS.

(M. SHARMA)
SCIENTIST D,
RSMC, NEW DELHI



OBSERVED AND FORECAST TRACK OF DEPRESSION OVER COASTAL AREAS WEST BENGAL AND ADJOINING NORTH ODISHA BASED ON 0600 UTC OF 14th AUGUST, 2022

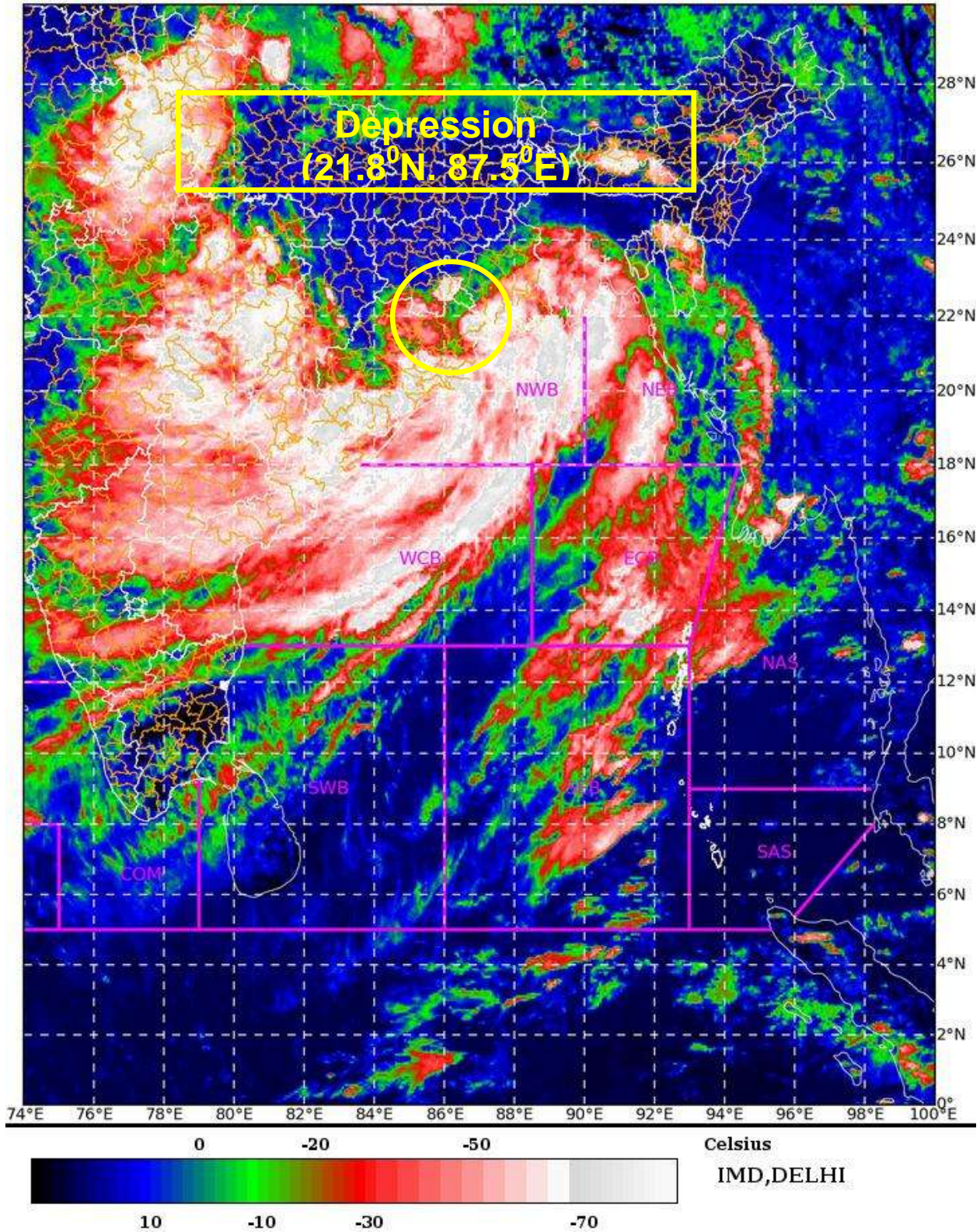


DATE/TIME IN UTC
IST=UTC + 0530
L: LOW PRESSURE AREA
WML: WELL MARKED LOW PRESSURE AREA
D: DEPRESSION (17-27 KT)
DD: DEEP DEPRESSION (28-33 KT)
CS: CYCLONIC STORM (34-47 KT)
SCS: SEVERE CYCLONIC STORM (48-63KT)
VSCS: VERY SEVERE CYCLONIC STORM (64-89 KT)
ESCS: EXTREMELY SEVERE CYCLONIC STORM (90-119 KT)
SuCS: SUPER CYCLONIC STORM (\geq 120 KT)

- LESS THAN 34 KT
- 34-47 KT
- \geq 48 KT
- OBSERVED TRACK
- FORECAST TRACK
- CONE OF UNCERTAINTY

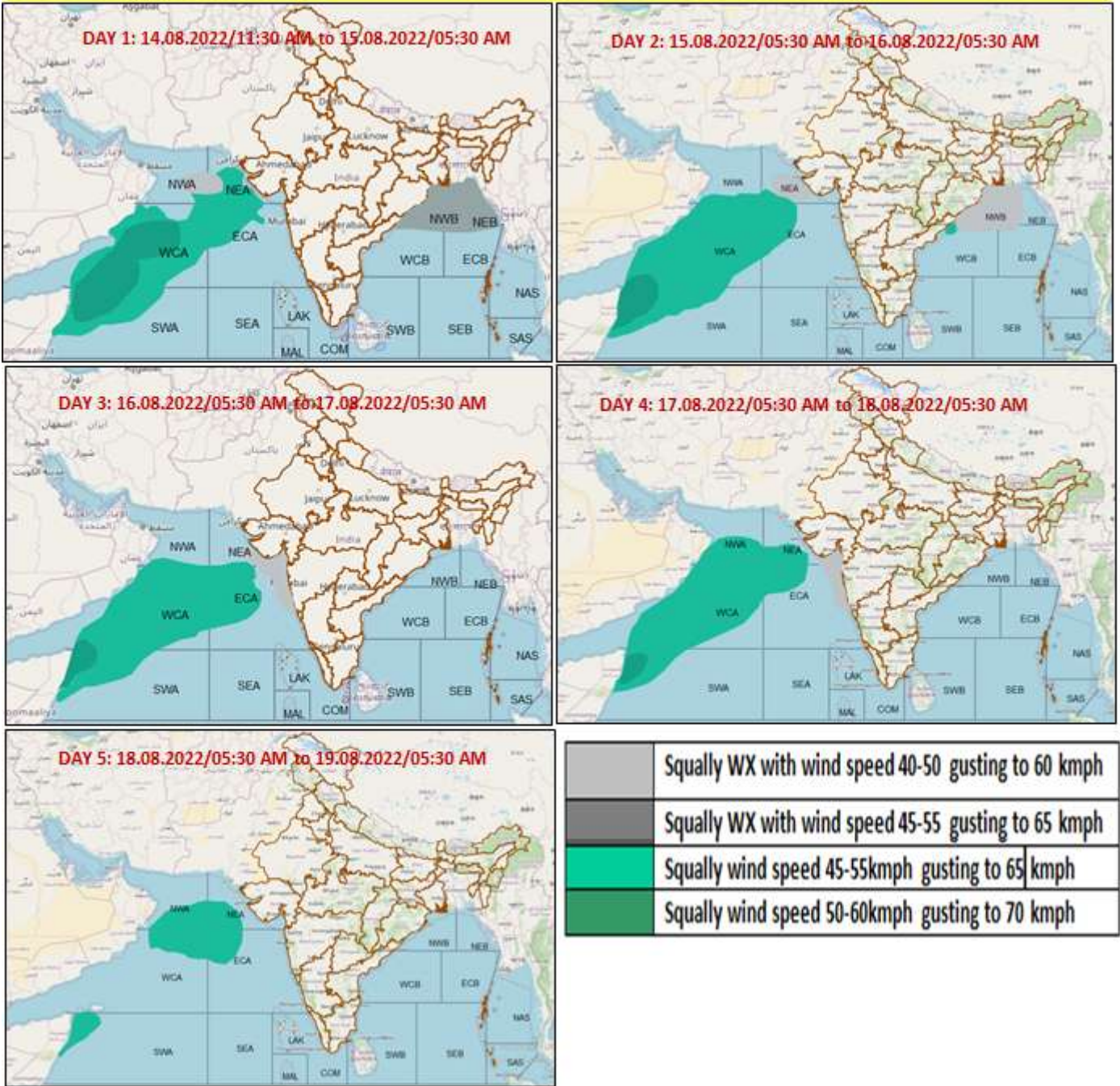
Cloud distribution: (a) Isolated: <25%, Scattered:25-50%, Broken: 51-75%, Solid:>75%, Convection Intensity: (a) Weak: Cloud Top Temperature (CTT) >-25°C, (b) Moderate: CTT: - 25°C to -40°C, (c) Intense: CTT: - 41°C to -70°C and (d) Very Intense: : Less than -70°C
PROBABILITY OF CYCLOGENESIS (FORMATION OF DEPRESSION): NIL: 0%, LOW: 1-33%, MODERATE: 34-66% AND HIGH: 67-100%
 This is a guidance Bulletin for WMO/ESCAP Panel Member countries. Visit respective National websites for Country specific Bulletins

SAT : INSAT-3D IMG 14-08-2022/(0700 to 0726) GMT
 IMG_TIR1_TEMP 10.8 um 14-08-2022/(1230 to 1256) IST
 L1C Mercator



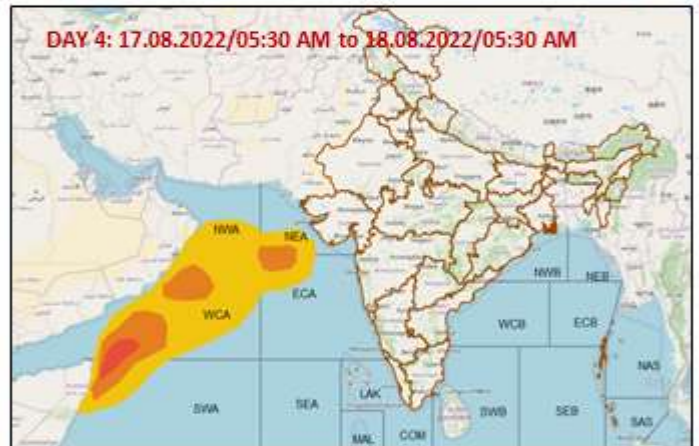
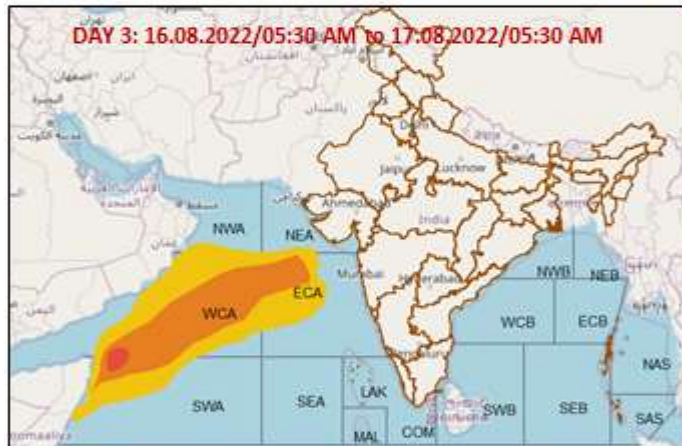
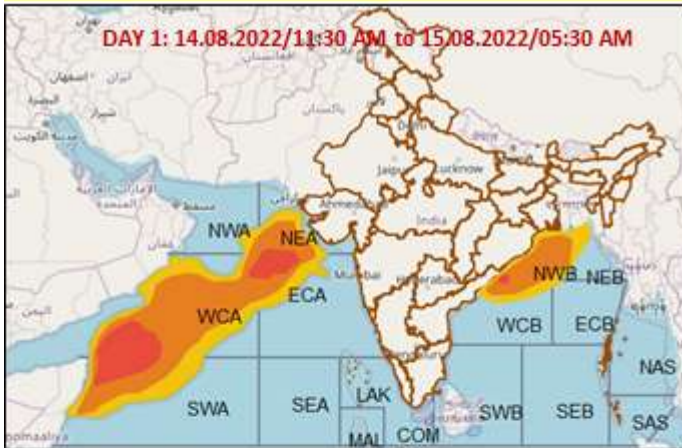
Cloud distribution: (a) Isolated: <25%, Scattered:25-50%, Broken: 51-75%, Solid:>75%, Convection Intensity: (a) Weak: Cloud Top Temperature (CTT) >-25°C, (b) Moderate: CTT: - 25°C to -40°C, (c) Intense: CTT: - 41°C to -70°C and (d) Very Intense: : Less than -70°C
 PROBABILITY OF CYCLOGENESIS (FORMATION OF DEPRESSION): NIL: 0%, LOW: 1-33%, MODERATE: 34-66% AND HIGH: 67-100%
 This is a guidance Bulletin for WMO/ESCAP Panel Member countries. Visit respective National websites for Country specific Bulletins

Fishermen Warning Graphics



Cloud distribution: (a) Isolated: <25%, Scattered:25-50%, Broken: 51-75%, Solid:>75%, Convection Intensity: (a) Weak: Cloud Top Temperature (CTT) >-25°C, (b) Moderate: CTT: - 25°C to -40°C, (c) Intense: CTT: - 41°C to -70°C and (d) Very Intense: : Less than -70°C
PROBABILITY OF CYCLOGENESIS (FORMATION OF DEPRESSION): NIL: 0%, LOW: 1-33%, , MODERATE: 34-66% AND HIGH: 67-100%
 This is a guidance Bulletin for WMO/ESCAP Panel Member countries. Visit respective National websites for Country specific Bulletins

Probability of exceedance of maximum sustained winds ≥ 45 kmph



	Probability of exceedance
	Low (1-33%)
	Moderate (34-67%)
	High (68-100%)

Cloud distribution: (a) Isolated: <25%, Scattered:25-50%, Broken: 51-75%, Solid:>75%, Convection Intensity: (a) Weak: Cloud Top Temperature (CTT) >-25°C, (b) Moderate: CTT: - 25°C to -40°C, (c) Intense: CTT: - 41°C to -70°C and (d) Very Intense: : Less than -70°C
PROBABILITY OF CYCLOGENESIS (FORMATION OF DEPRESSION): NIL: 0%, LOW: 1-33%, , MODERATE: 34-66% AND HIGH: 67-100%
 This is a guidance Bulletin for WMO/ESCAP Panel Member countries. Visit respective National websites for Country specific Bulletins